

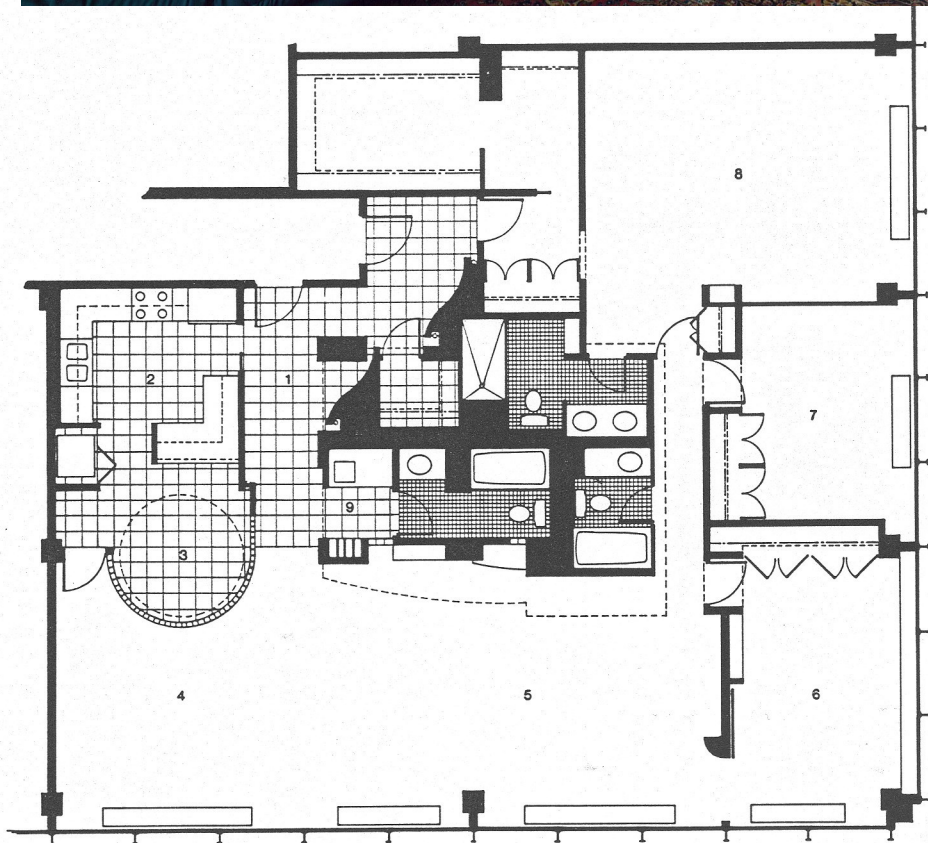


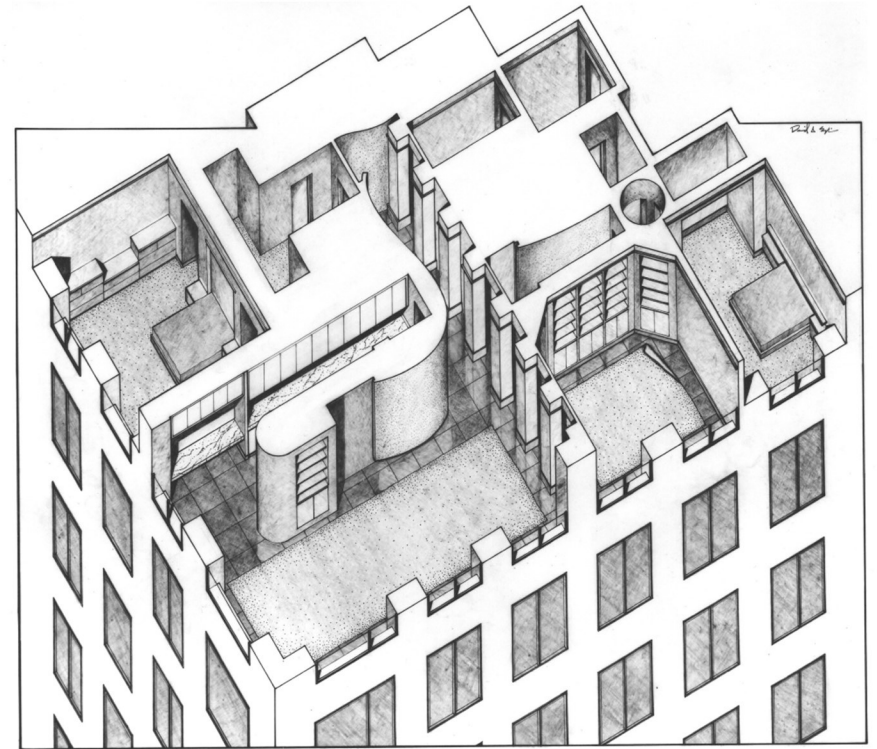
2400 N. LAKEVIEW # 1201-2

2400 N. Lakeview
Chicago, Illinois

Two adjacent condominium apartments were combined into a single 2,500 sf residence in a Mies Van der Rohe high rise building overlooking Lincoln Park and Lake Michigan. Primary living spaces are organized around an internal core containing bathrooms, wet bar and storage areas. The existing kitchen expands to incorporate a breakfast area within a sculptural glass block wall.

The major living areas are oriented towards views overlooking the park and lakefront. Curved soffits and walls combine with glass block and lighting highlights to encourage a continuous spatial flow. Primary materials include marble and white oak flooring, custom millwork, granite counters and glass block walls.





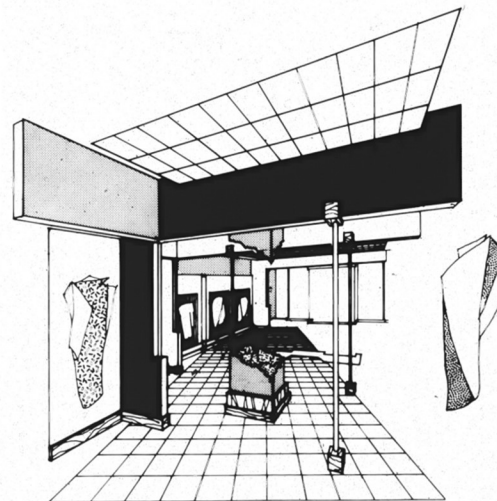
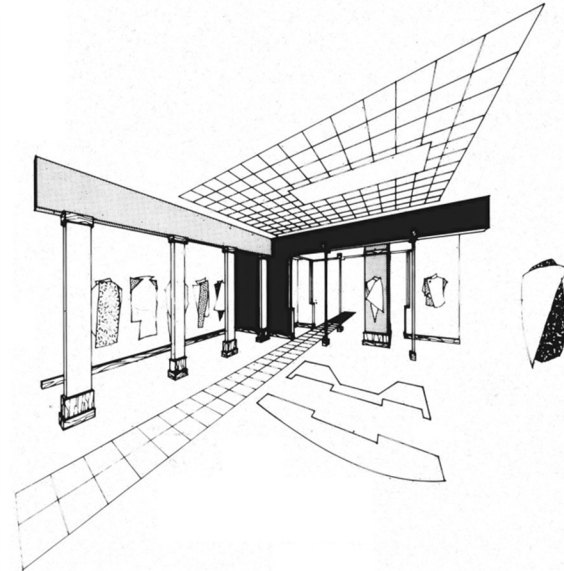
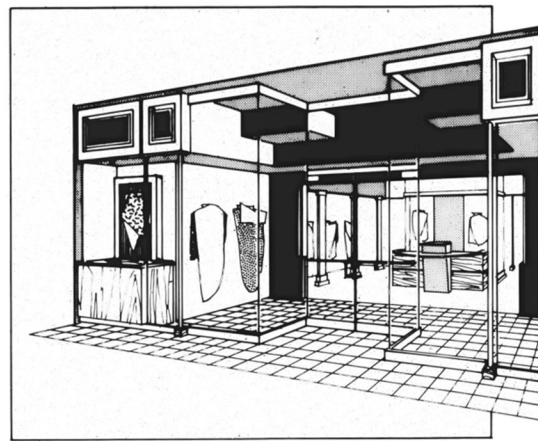
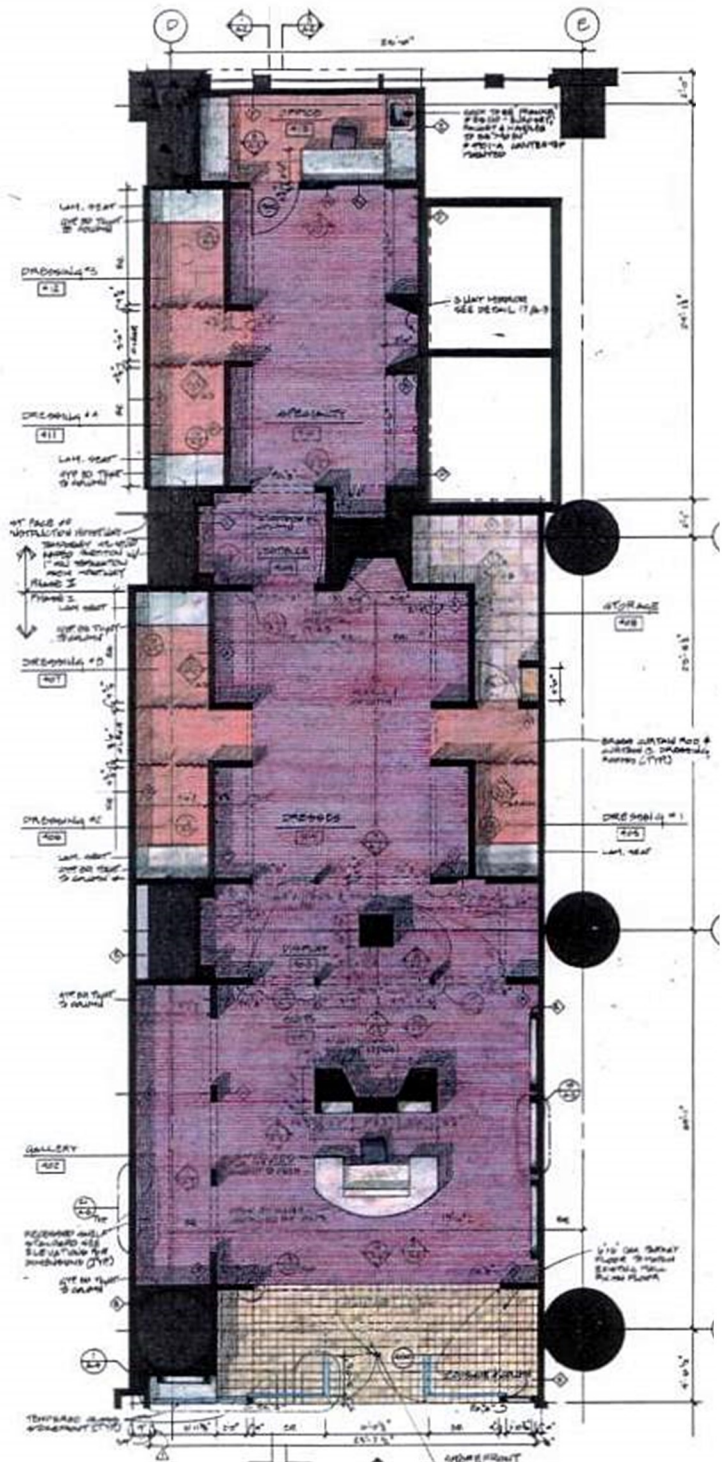
161 E. Chicago Avenue
Chicago, Illinois

Two adjacent condominium apartments in a luxury high-rise were combined into a single 2,500 sf residence. Occupying the southwest corner of the building, primary concern focused on re-organizing both units into a single, unified configuration.

A formal colonnade links the foyer with the main living area, establishing a visual connection along the major circulation spine. A sculptural, floating curved wall opposite the colonnade engages the primary spaces, diminishing the distinction between gallery, living/dining room and kitchen. The result is a continuous spatial flow balanced by the rhythm of the colonnade. The study and two remaining bedrooms are configured with an orientation towards the exterior view. Bathrooms and mechanical closets make up the remaining space.

Primary materials include wood flooring with inset marble and carpet, custom millwork, trim and decorative plaster soffits.





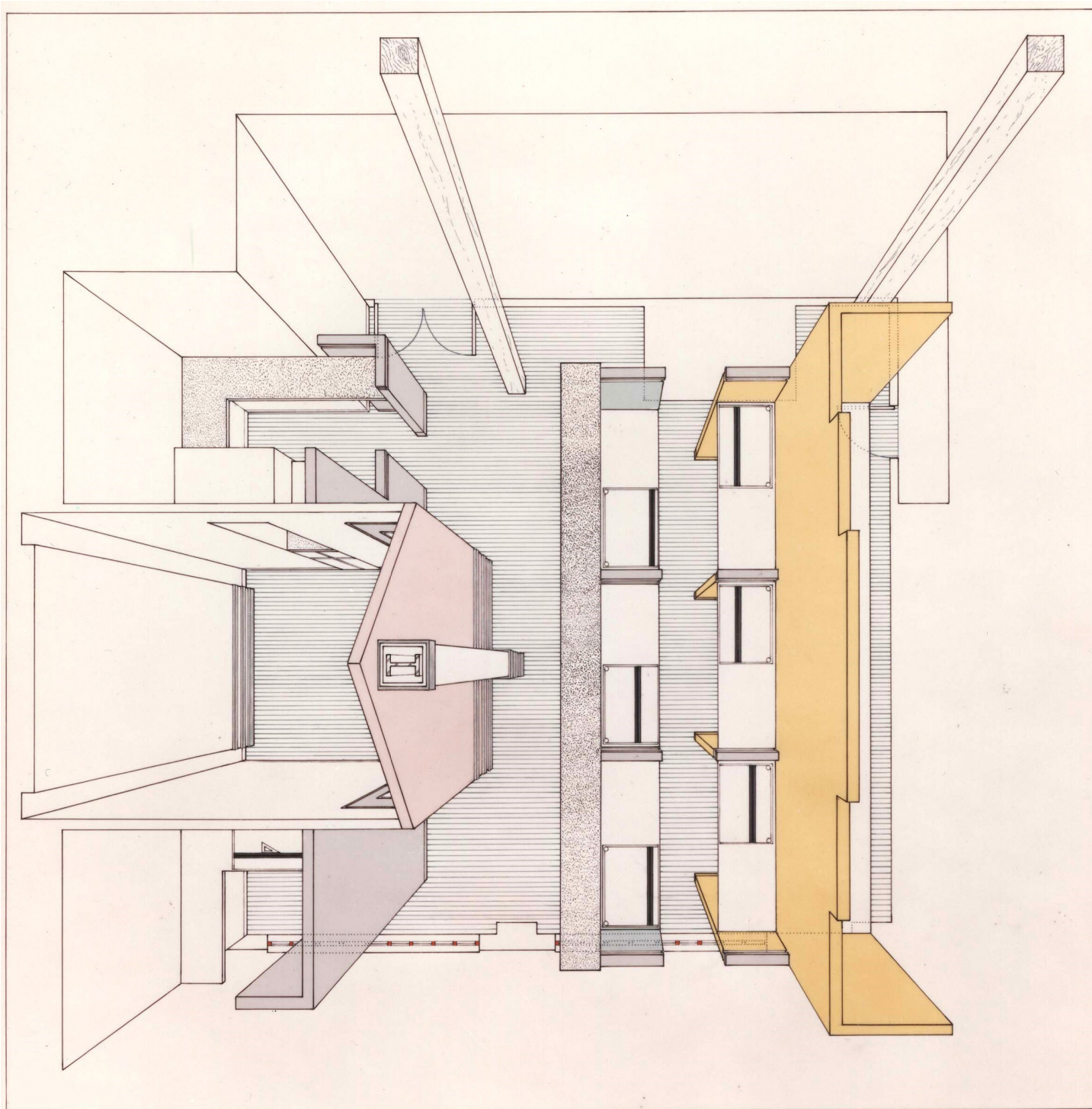
The Professional Image

700 N. Michigan Avenue, Chicago

Architecture and fashion interact to promote a refined setting for a 1,700 sf retail clothing boutique. Located within a Michigan Avenue mall, the plan incorporates a formal organization directed towards its executive female clientele.

A thematic sequence of three primary rooms presents the clothing collection. Providing a transition from the large scale mall to the boutique's intimate setting, the storefront initiates a sequence of layers representing each room. Beginning with main products at the front, each volume becomes progressively smaller in response to the increasingly specialized items on display. By conceiving each room as a centralized enclosure linked by a linear organization, a variety of architectural settings are suggested. The intention being to encourage a sense of discovery through the several volumes while maintaining an understanding of the whole.

Each space is designed to achieve an equity between the objects in the room and the room itself. The juxtaposition of fine building materials and clothing reinforces the boutique's sophisticated atmosphere as a unified expression.



Loft Office

Chicago

Within 1,300 sf of open loft space, an arrangement of 'buildings' and 'facades' establish the organization of an Architect's office. Informality, flexibility and a sense of community define the working environment. Work stations in the studio are located beneath the industrial image of a stepped wall. The conference room is contained within the image of a house.

Bright colors and surfaces enhance the construction. Varied wall heights and smooth wall construction enliven the symmetrical plan and contrast the building's rugged masonry and timber construction.