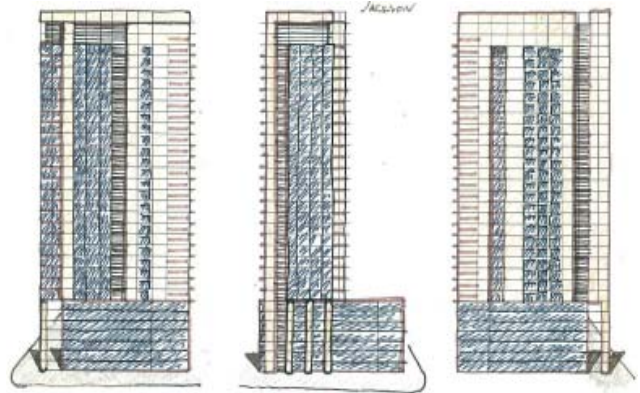


# 1225 W. Jackson Tower

Chicago, Illinois



The Jackson Boulevard Development consists of a new 30 story condominium tower with 207 residential dwellings atop a six story base of 233 enclosed parking spaces. An urban collage in terms of massing, the low and tall elements of the building reflect the structures found in the neighborhood. The building is located on the property to allow for a new ground level public park to the east. The six story parking structure will have a landscaped roof that will connect to interior residential common space at the same level. Cantilevered balconies and numerous window configurations add a dynamic distinction to the development. A slim roof canopy caps the building's strong presence.



Site Plan



