

# Country Wood Apartments

Naperville, Illinois

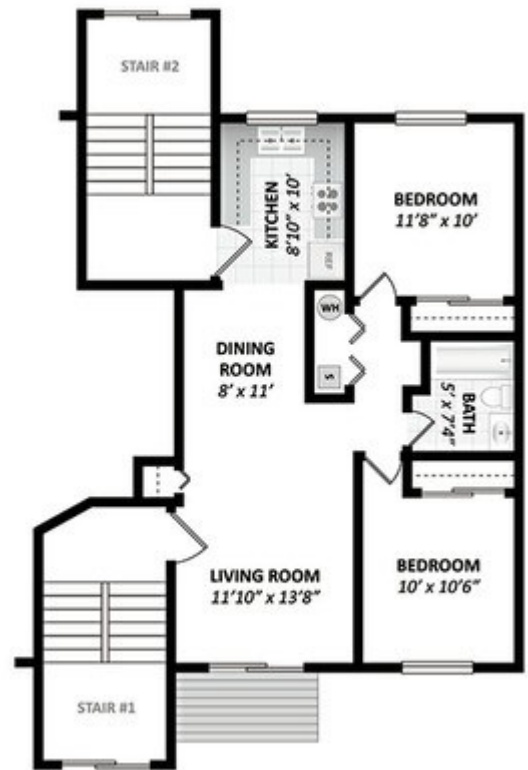


Situated on the outskirts of Naperville, Country Wood consists of eleven three-story buildings in an attractively landscaped apartment complex.

A development of One Hundred and Eighty townhomes, this Planned Unit Development introduces affordable housing to a growing portion of Naperville with easy access to Metra and public transportation. In association with the Illinois Housing Development Authority, the project demonstrates IHDA's commitment to architectural excellence, construction of the highest quality, sound building management and wise housing investments.

All dwellings contain two Bedrooms and Sixty of the dwellings are handicap accessible.

Site



Typical Apartment Plan

