

**1725 W. North Avenue**  
*Chicago, Illinois*



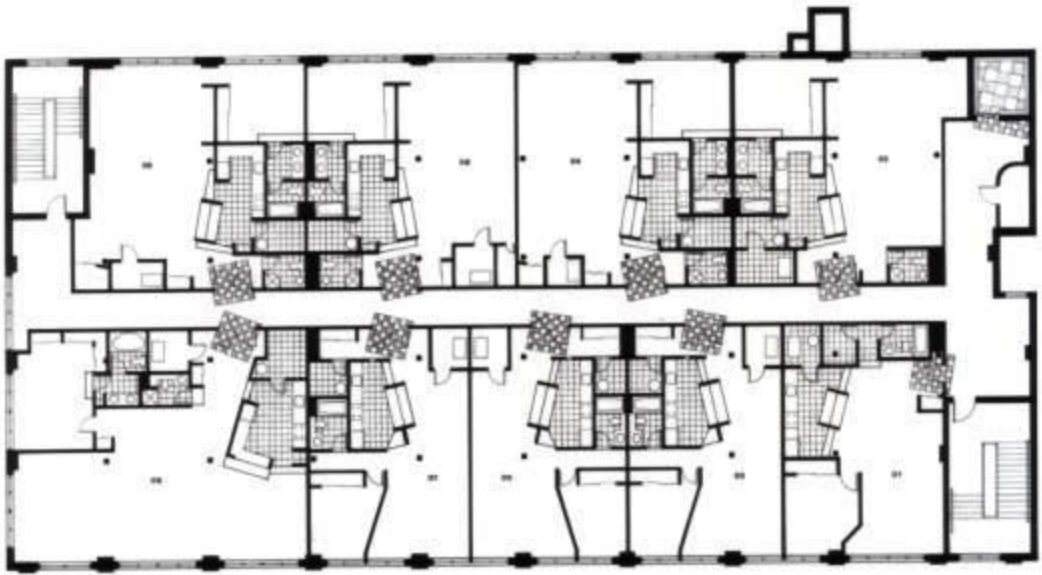
Located in the Bucktown/Wicker Park neighborhood on Chicago's north side, a four story heavy timber industrial building was renovated into 27 residential loft dwellings totaling 55,000 sf. Sandblasted heavy timber and masonry structure provides a contrasting framework for new construction, while retaining the original industrial character of the building.

Individual units contain a kitchen and bathroom core raised upon a built-up platform positioned to promote an open loft environment. Dwellings vary in size from 980 sf one bedroom to 1,800 sf three bedroom units. Partition walls of various heights, angles and colors further articulate each residence. Rotated tile 'foyers' project from within each unit to enliven the corridors and announce each entrance. Existing steel sash windows have been replaced with full height french doors and side-light panels, maximizing light and fresh air into all dwellings. New steel balconies hung from the building's exterior were available as a buyer option.

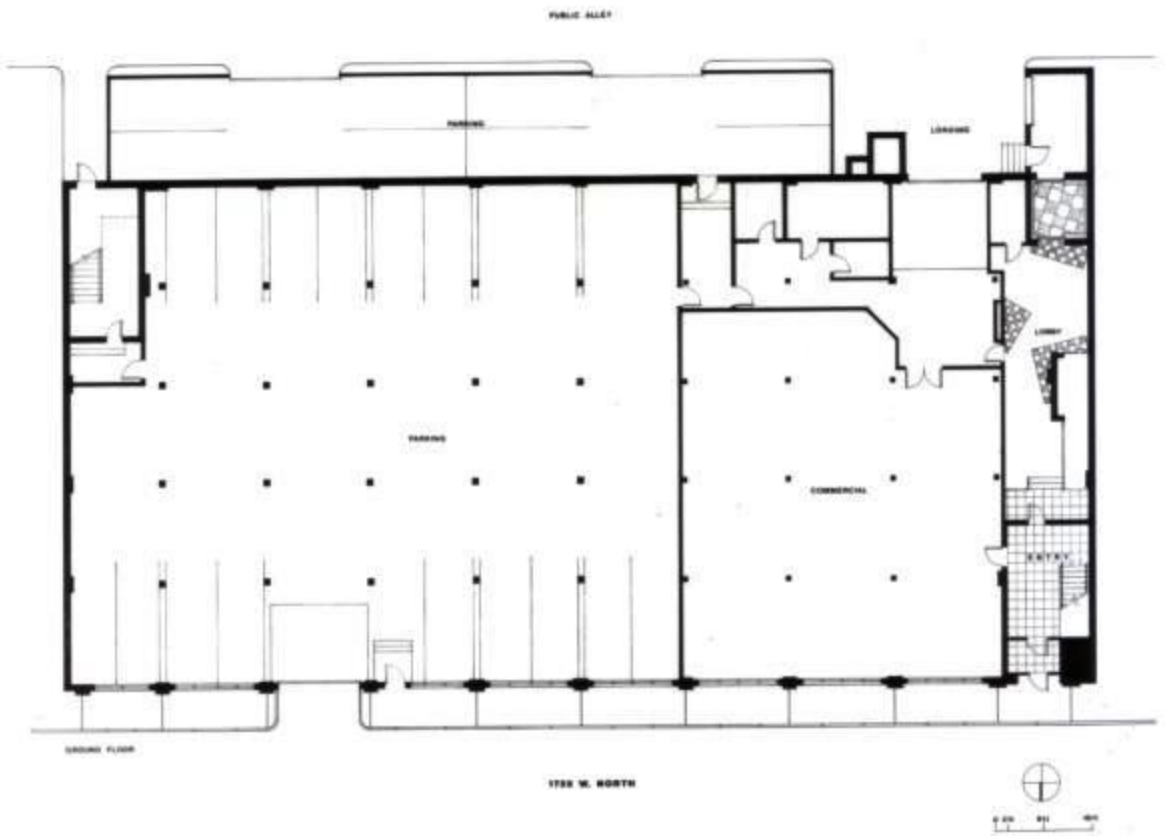


An enclosed parking garage and commercial tenant space occupy the building's first floor. Wood structure was replaced with concrete columns that support a concrete ceiling to achieve required fire separations. Additional parking and loading facilities are accessed from the alley.





FLOOR 2-4



GROUND FLOOR

1752 W. NORTH

